

INLAND NAVIGATION

Freight and tankers



8010. MOTOR FREIGHTER
8030. CONTAINERVESSEL



8020. MOTOR TANKER
8040. GAS TANKSHIP



8050. TOWING MOTOR FREIGHTER
8110. ON TOW FREIGHTER



8060. TOWING MOTOR TANKER
8120. ON TOW TANKER



8070. MOTOR FREIGHTER, WITH 1 OR MORE SHIPS ALONGSIDE
8080. MOTOR FREIGHTER ALONGSIDE TANKSHIP



8090. MOTOR FREIGHTER PUSHING ONE OR MORE SHIPS
8100. MOTOR FREIGHTER, MIN. ONE TANKSHIP.

8110. TUG FREIGHTER
8120. TUG TANKER



8130. COUPLED TUG FREIGHTERS
8140. COUPLED TUG FREIGHTER/TANKER, 1 TANKSHIP

8150. FREIGHT BARGE



8160. TANKBARGE

8170. FREIGHT BARGE WITH CONTAINERS
8180. GAS TANKBARGE

Push units

Only cargobarge

8210. PUSHTOW WITH 1 CARGO BARGE
8220. PUSHTOW WITH 2 CARGO BARGES
8230. PUSHTOW WITH 3 CARGO BARGES
8240. PUSHTOW WITH 4 CARGO BARGES
8250. PUSHTOW WITH 5 CARGO BARGES
8260. PUSHTOW WITH 6 CARGO BARGES
8270. PUSHTOW WITH 7 CARGO BARGES
8280. PUSHTOW WITH 8 CARGO BARGES
8290. PUSHTOW WITH >8 CARGO BARGES

Per shipstype the tonnage of the barges will be added up.

With minimal 1 (gas-)tankbarge

8310. PUSHTOW 1 (G)TANKBARGE
8320. PUSHTOW 2 BARGES - 1 (G)TANKBARGE
8330. PUSHTOW 3 BARGES - MIN. 1 (G)TANKB.
8340. PUSHTOW 4 BARGES - MIN. 1 (G)TANKB.
8350. PUSHTOW 5 BARGES - MIN. 1 (G)TANKB.
8360. PUSHTOW 6 BARGES - MIN. 1 (G)TANKB.
8370. PUSHTOW 7 BARGES - MIN. 1 (G)TANKB.
8380. PUSHTOW 8 BARGES - MIN. 1 (G)TANKB.
8390. PUSHTOW >8 BARGES-MIN. 1 (G)TANKB.

Per shipstype the tonnage of the barges will be added up.

Not just cargo carrying



8400. SINGLE TUGBOAT

8410. TUG BELONGING TO ONE OR MORE TOWS, the tug can also be alongside

8420. TUG ASSISTING VSL, LINKED COMB (i.e. barges) or other floating objects



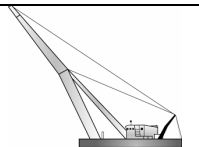
8430. SINGLE PUSHBOAT



8440. PASSENGER SHIP, FERRIES, RED CROSS SHIP, CRUISE SHIP, ETC



8450. SERVICE VESSEL, POLICE, MEASURING VESSEL, HARBOURVESSEL. Also private company management vessels.



8460. MAINTENANCE CRAFT, floating crane, mud dredge, dredger, cable laying vessel, salvage vessel, concrete vessel



8470. TOWED OBJECT N.O.S

8480. FISHING BOAT

8490. OTHER FLOATING OBJECTS N.O.S..

RECREATIONAL



1800. motoryacht, also fast sailing



1810. speedboat



1820. sailingyacht using (support) engine

1830. sailing yacht under wind

1840. vessel for sportfishing

1850. RECREATION SAIL/MOTORSHIPS>20M



1890. recreational vessels n.o.s. i.e. rowingboats, canoe, rubberboat, windsurfers, etc

OCEAN CARRIERS

Freight and tankers



1500. OCEAN GOING FREIGHTER



1510. OCEAN GOING CONTAINERSHIP



1520. OCEAN GOING BULK CARRIER



1530. OCEAN GOING TANKER (NON GAS)

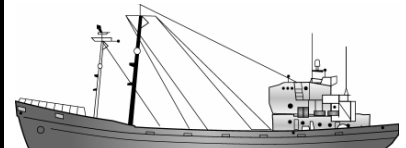


1540. OCEAN GOING GAS TANKER

Not just cargo carrying

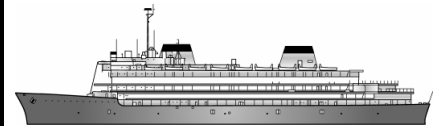
1601. ocean tugboat, supply vessel: (alone)

1602. ocean tugboat, supply vessel: (tugging)



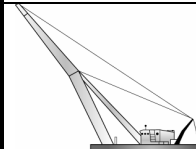
1750. fishingboat (non inland fishing, no clam fisher)

1592. ferric, ro-ro ship (not just cargo carrying)



1590. PASSENGER VESSEL

1712. oceansailing service vessel, patrolvessel, pilot services, measuring vessel, other tenders, etc.



1720. oceansailing maintenance craft: floating crane, mud dredge, cable laying vessel, salvage vessel, concrete vessel, etc.

1780. ocean sailing object: oil- crane rigg, dead ship, etc

1770. marine vessels (also Royal Army)

1700. oceansailing vessels n.o.s. and floating objects: weathervessels, trainingvessels, etc.

